

# SCL series automatic solder paste printing machine



Global sales leader, wide range of applications, leader in LED super large board printing system



# Specifications

Performance	
Repeat Position Accuracy( @6 Sigma Cpk 2.2.0)	±10 μm(@6 Sigma, Cpk 2.2.0)
Printing Accuracy(@6 Sigma, Cpk*2.0)	±25 μm(@6 Sigma, Cpk 2.2.0)
Cycle Time	<17s (Exclude Printing & Cleaning)
Changeover Time	<5Min
Apply paste option	solder paste, printing ink, silver paste...

When the Cpk value is higher the variability of process specification limit is Lower. In a qualified 6σ process.(means allow ± 6 Sigma in specification limit), Cpk ≥ 2."

Board Handling	
Board Size Range (mm)	80*50-1200*330mm
Board Thickness	0.6~6mm (Fixtures below 0.6mm are required)
Max. Board Weight	8kg
Stencil Size Range (X*Ymm)	1300 * 370-1500* 737mm
Stencil Thickness	20~40mm
Board Edge Clearance	3mm
Board Bottom Clearance	15mm
Board Clamp	Programmable motorized rear rail
	Top Clamping
	Side Clamping
Support System	(Option) Vacuum Adsorption Function
	Magnetic Pin
	Side Support Block
	(Option) Auto Flexible Pin 1 % diagonal

Printing Parameter	
Squeegee Type	Steel/Rubber Squeegee Blade(angle 60°/55°/45°)
Print Pressure	0~15kg
Print Speed	10~200mm/sec
Snap-off Speed	0.01 ~125mm/sec
Separation option	(Can be programmed to 3 steps control) Separation after squeegee up;Squeegee up after separation
Transport Speed	100-1500mm/sec
Transport Direction	—R,LTL RTL,RTR
Table Adjustment Range	X: ±4mm;Y:±6mm;O:±2°
Cleaning Method	1.Drops of rain type cleaning system 2.Dry/Wet/Vacuum Modes

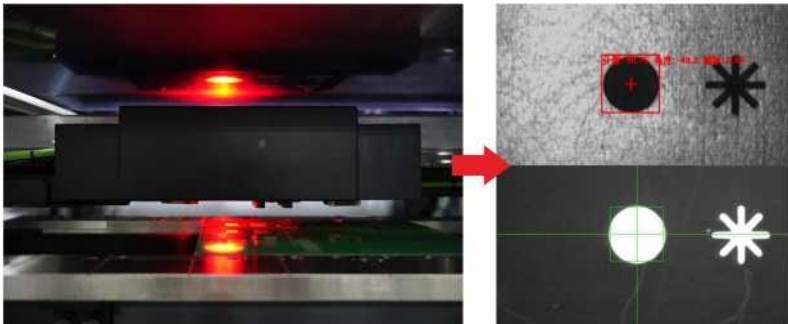
Vision	
CCD FOV	standard: 6.4x4.8mm ( option 10x8mm)
fiducial Mark Types	Standard Shape Fiducial Pad/HoLe
Camera System	1. CCD Camera 2. Telecentric Concentric Vision System 3. Four Directions Independent Concentric 4. *Annular LED Lighting Source

Machine Parameter	
Power Source	AC: 220V±10%,50/60HZ 10) 3KW
Air Pressure	4-6Kg/cm2
Air Consumption	約 0.007m3/min
Operation Temperature	-20°C~+45°C
Operation Humidity	30-60%
Machine Weight	Approx:1550Kg
Approximate Dimensions	3100mm(L)*1500mm(W)*1 700mm(H)
Operation System	Windows 7/10
Acoustic Noise Level	小于 87dB Less than 87dB
Certification standards	CE

## Standard

### High Precision Printing Quality

#### CCD Camera



Coaxial image CCD up and down double, adaptive Lighting automatic adjustment; Camera Automatic Recognition of Various MARK Point Graphics.

#### 2D InspectSolder



SPC application management; Real-time monitoring of printing quality status; It is conducive to the timely discovery and adjustment of bad conditions.

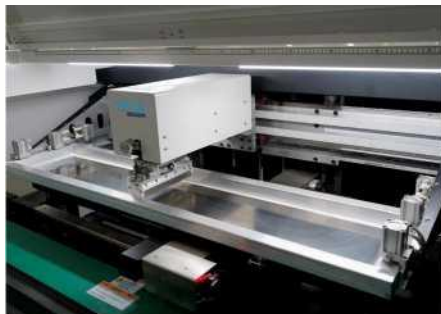
## More Reliability & Efficiency

#### Marble construction



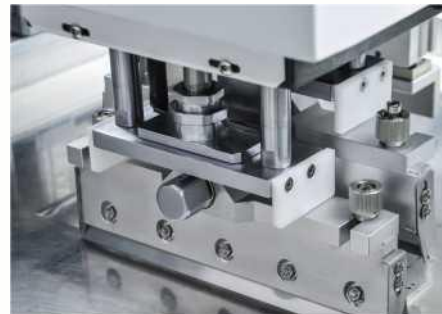
Use marble structural parts to ensure that the equipment accuracy and Long-term stability is not deformed.

#### High precision longboard printing



CL series of unique Long platform and track fixed design, to ensure stable support PCB. Short squeegee horizontal printing, pressure stability, saves solder paste.

#### Individual Floating squeegees



Squeegee adaptive floating head\* front and rear squeegee Lift controlled by Independent motor, printing with constant pressure.

#### Spraying cleaning system



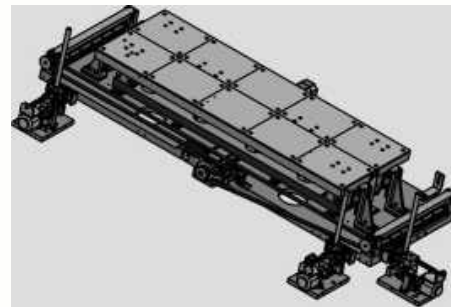
The cleaning agent spraying device is able to accord to PCB size adjusting the filling amount and area automatically.

#### Integrated structure



High precision, high rigidity integrated frame body structure, to ensure long-term printing equipment stability.

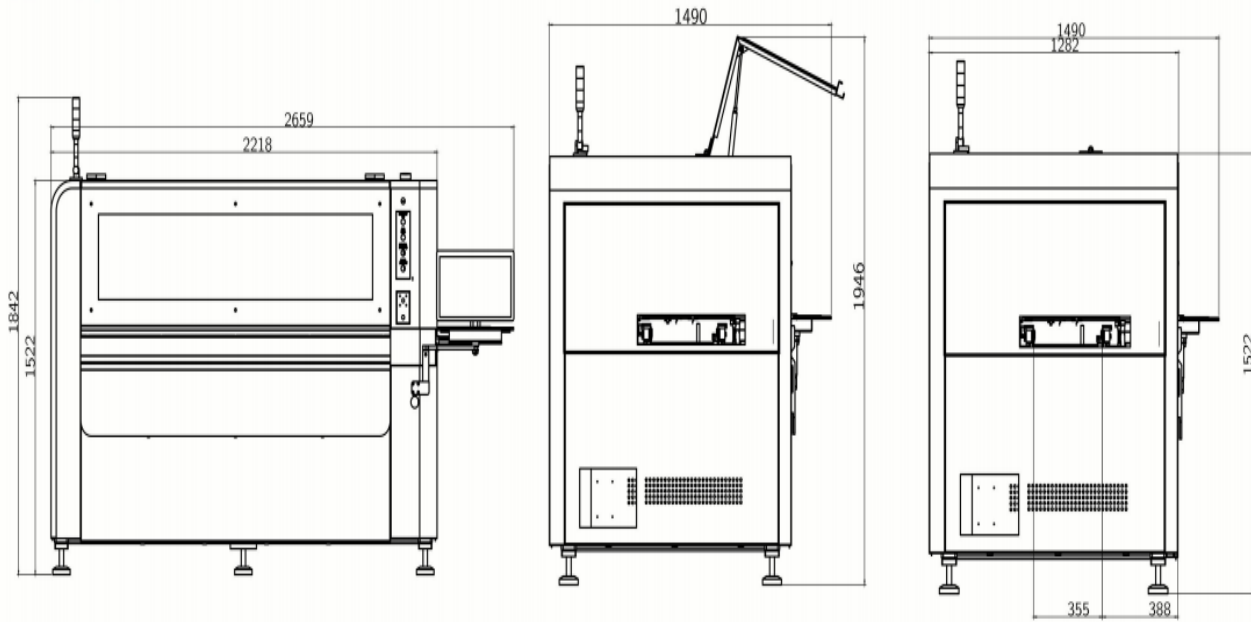
#### Automatic high precision plate thickness adjustment



The electric support platform can automatically adjust the support height according to the PCB thickness.

# Product size

## SCL1200



Product description text, drawings and technical parameters are subject to change with the development of technology without prior notice, please understand.

## Welcome inquiry

- 1, Please visit : [www.smthelp.com](http://www.smthelp.com)
- 2, Find us more: <https://www.facebook.com/autoinsertion>
- 3, Know more our team: <https://cn.linkedin.com/in/ming-gan118/>
- 4, Welcome to our factory in Shenzhen China
- 5, See more machine working video, please Youtube: Auto Insertion
- 6, Google: Auto+insertion, to get more informations
- 7, Looking forward to your email: [info@smthelp.com](mailto:info@smthelp.com)
8. Wechat/Whatsapp/skype: +86 13602562576